

TDDF FMG Walk Notes

Volume I, Issue 9

Monday October 1, 2007



FMG'S CRITICAL ISSUES	
1	Maintain pasture intakes of 15kgDM/cow/day.
2	Continue to address soil fertility issues with the second round of a blended mix.
3	Continue with AI.



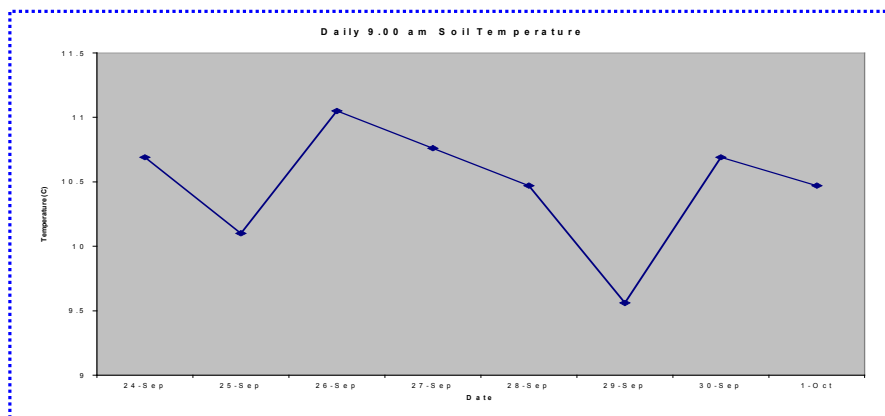
SUMMARY OF FARMING OPERATION DATA

Pasture Information		Animal Production	
LER	10 days/leaf	Litres/cow/day	17
Rotation Length	30 days	MS/cow/day	1.23 kg
Pasture Growth Rate	36 kgDM/ha	MS/ha/day	2.73 kg
Average Pasture Cover	1849 kgDM/ha	Cow intake	13 kgDM/cow/day
Soil Temperature	10.47°C	Supplement Fed	-
Rainfall (past 7 days)	38.0 mm	Body Condition Score	4.1

TDDF Grazing and Animal KPI'S

Pasture Management

Soil Temperatures remain stubbornly down at around 10 °C.



Pasture Growth Rates continue to be in the thirties @ 36 kgDM/ha/day.

Pasture Demand is around 30 kgDM/ha/day (Stocking Rate of 2.3 X 13 kgDM/cow/day) – calves excluded.

Average Pasture Cover has improved from 1804 kgDM/ha to 1849 kgDM/ha.

Fertiliser Plan. 290 kg/ha of a 16:4:7:5 fertiliser blend has been applied to the whole farm. A second application of a 12:5:8:6 blend will follow in the next few days at 345 kg/ha.

We will report on the benefits of these applications as soil nutrient deficiencies are addressed.

Rotation Length remains at 30 days.

Farm Name Gums

1/10/2007

Wedge Date

Feed Wedge for Farm Block -

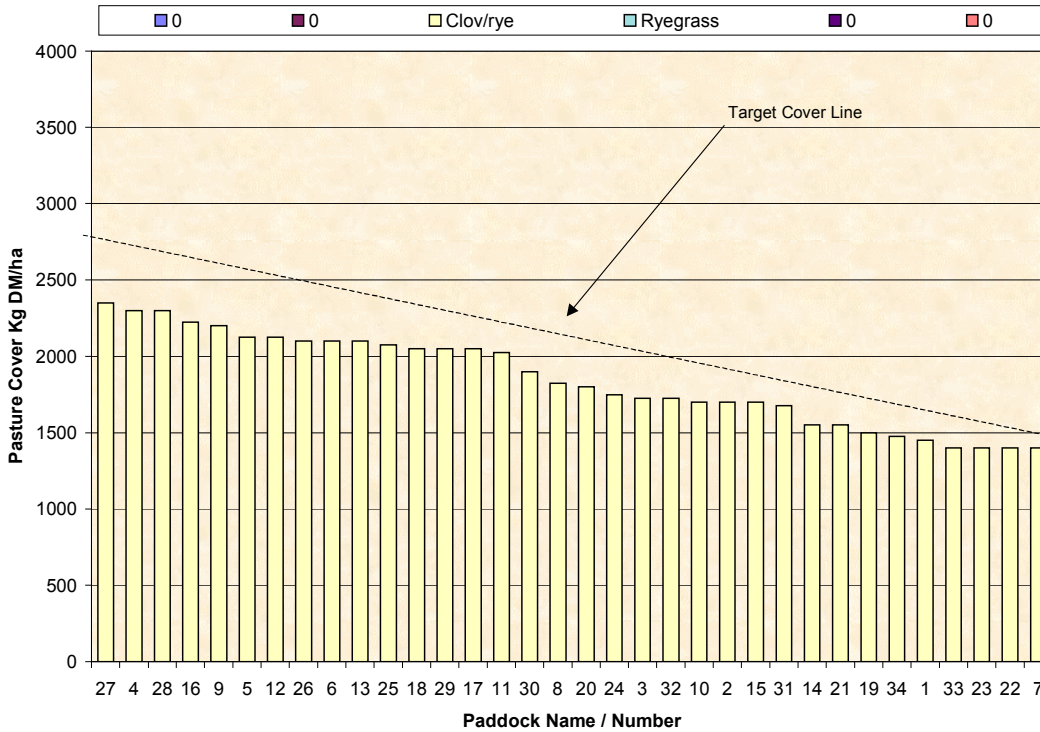
Farm

1849

Average Farm Cover

36.0

Current Growth Rate



Animal Performance

There are currently **820 cows** in the milking herd.

Feed Intake. At a rotation length of **30 days**, the cows are grazing about **12 ha/day**. Pre-grazing covers are about **2400 kgDM/ha/day** and residuals are **1500 kgDM/ha/day**. The cows are taking in (2400-1500) kgDM/ha/day = **900 kgDM/ha/day**. A 12 ha area offers the herds 10800 kgDM/day = **13 kgDM/cow/day**. This is below the targeted **15kgDM/cow/day**. This is the result of a period of reduced growth rates. At **12.8 MJME/kgDM** the cows are on a daily energy allocation of **167 MJME/cow/day**.

Reproduction. Mating (AI) continues and the FMG will aim for reproductive targets for the 2008/09 season of:

- 70% 6 WICR;
- 13% NICR; and
- <10% induced.

These are industry best management targets obtained from the inCalf project.

Production remains at **1.23kgMS/cow/day**. The milk test has improved slightly to **4.13% Fat** and **3.26% Protein**.

Milk Quality. Bulk Milk Cell Counts averaged **192,000** compared with **182,000** last week.

THE NEXT WEEKLY TDDF FMG farm walk will be Monday October 8.

TDDF Farm Management Group – Basil Doonan (Davey & Maynard), Rob La Grange (TIAR), Chris Haynes (TIAR), and Justin McGowan and Nicki Devantier (TDDF Sharefarmers).