



FMG'S CRITICAL ISSUES	
1	Pasture growth rates
2	Rotation length
3	Herd body condition
4	Transition cow feeding
5	Automatic drafting



SUMMARY OF FARMING OPERATION DATA			
Pasture Information		Animal Production	
LER	16 days/leaf	Cows (dry)	696
Rotation Length	60 days	Litres/cow/day	0
Pasture Growth Rate	20kgDM/ha/day	MS/cow/day	0kg
Average Pasture Cover	2200 kgDM/ha	MS/ha/day	0kg
Soil Temperature 9AM	12.4°C	Cow intake	9 – 11 kgDM/cow/day
Rainfall (past 7 days)	10 mm	Supplement Fed	-
MOFC (\$/cow)	\$0.00	Body Condition Score	4.9 (Heavy herd) 4.9 (Light herd)

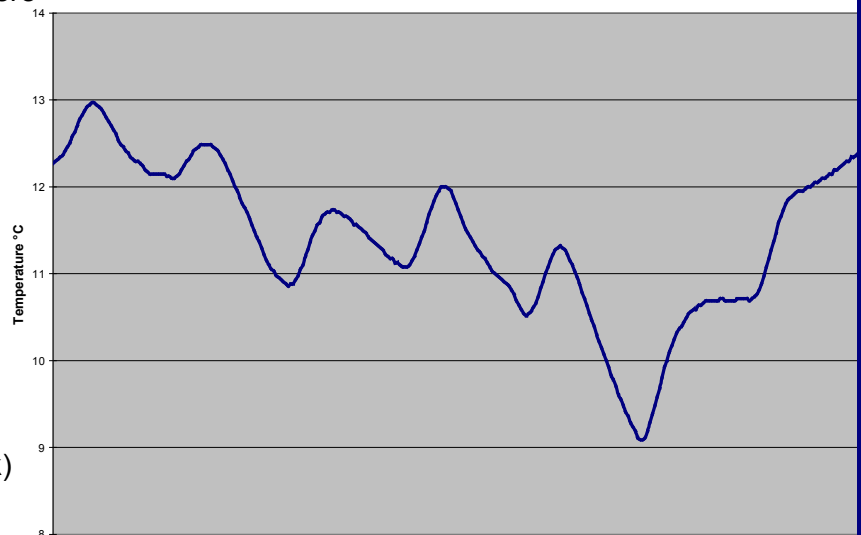
*Note the herd gets body condition scored every 2 weeks.

TDDF Grazing and Animal KPI'S

Pasture Management

- The adjacent graph shows the changes in soil temperatures, clearly evident is the severe reduction in soil temperature that is due to a frost over the weekend.
- Pasture growth has reduced to 20kgDM/ha/day. This matches with the pasture demand per hectare (2.1x10kgDM/cow/day). Monitoring soil temperature and growth will be crucial over the next few weeks. Hay will have to be introduced into the diet to supplement pasture when supply falls behind demand. The FMG expect to add hay into the diet when the 150 replacements enter the herd (next week) providing that pasture growth continues to slow.

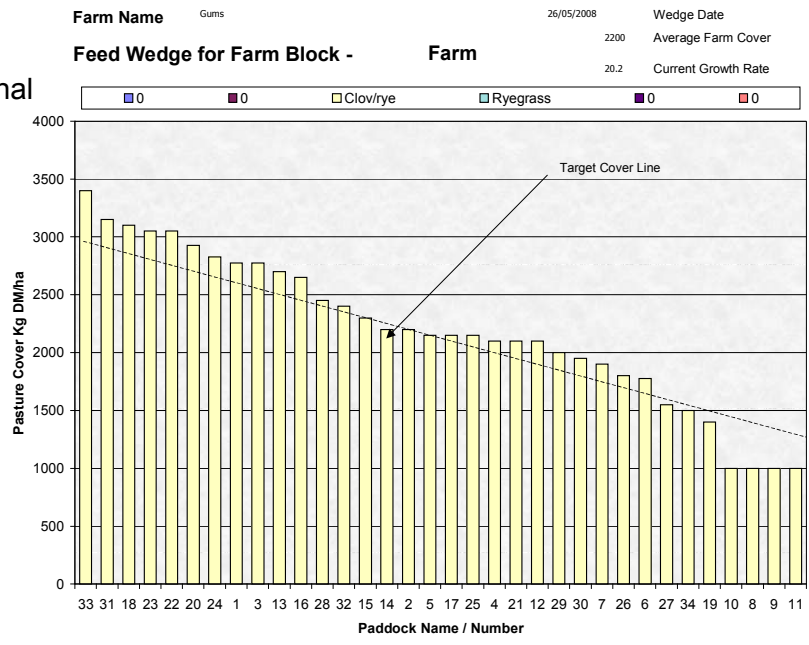
TDDF soil temperatures over the past 7 days



Monday May 19 - Monday May 26

- Leaf emergence rate has remained at 16 days per leaf. The FMG will continue with the 60-day rotation length, as there is no immediate need to build cover. It is anticipated that this will sit between 60 – 90 days over the next 2 months (depending on the leaf emergence rate and average pasture cover)

- Nitrogen has now been applied to whole of the grazing platform, decisions on winter nitrogen applications will be made weekly.
- Post grazing residuals remain at 1300 – 1400 kgDM/ha. During the final month before calving the FMG will allocate grazing area to reduce this residual to 1000 – 1200 kgDM/ha as pasture supply will be below demand.



Animal and Financial Performance

- Over the past week, 4 animals were culled for animal health reasons bringing numbers back to 696.
- Both herds are still being allocated 10kgDM/cow/day of pasture. The heavy herd is still following the light herd. This has shown to have been very successful with both herds now being at the same body condition score (4.9 BCS). There are about 5 – 10 cows to be assessed following their inability to improve condition over the past 2 months and decisions will be made on whether to calve them down or remove them as culls.
- Transition Cow Nutrition Plan – This grass based production system is highly susceptible to Milk Fever and Grass Tetany due to the high DCAD content of pastures.
 - The herds will get 70 grams/cow/day of CauseMag (MgO) dusted on the pasture for the 30 days pre calving
 - Springing herd to be given a 50:50 hay / pasture diet plus 70 grams/cow/day of CauseMag. Hay has a lower DCAD content than pasture, reducing the total DCAD content of the diet allowing greater calcium uptake post calving.
 - Colostrum herd to be supplemented with calcium and magnesium, using CauseMag at 70 grams/cow/day for magnesium and DCP or Limeflour at 100 grams/cow/day for calcium.
- Quotes have been sourced for construction of an automatic drafting system for the farm. This system will address the large herds issues around drafting individual animals, which will help during AI, calving, weighing (demonstration requirement), drying off and separating sick cows. It is anticipated that this will be installed in the next 2 months.

THE NEXT WEEKLY TDDF FMG farm walk and BBQ will be on Tuesday June 3 at 10:30am. TDDF Farm Management Group – Basil Doonan (Davey & Maynard), Rob La Grange (TIAR), Chris Haynes (TIAR), and Justin McGowan and Nicki Devantier (TDDF Sharefarmers).

NOTE THE CHANGE OF DATE FOR NEXT WEEKS FARM WALK
 Lesley Irvine from the TIAR Dairy Centre will be conducting a 2 – 3 Hour Calf Rearing Seminar followed by a BBQ lunch on Tuesday June 3 from 10:30am (this will coincide with the TDDF Monthly Farm Walk and BBQ). For more information contact Chris Haynes on 0408 548 091.