



FMG'S CRITICAL ISSUES	
1	Hold the rotation length
2	Start feeding concentrates
3	Continue to apply nitrogen
4	Magnesium and calcium supplementation



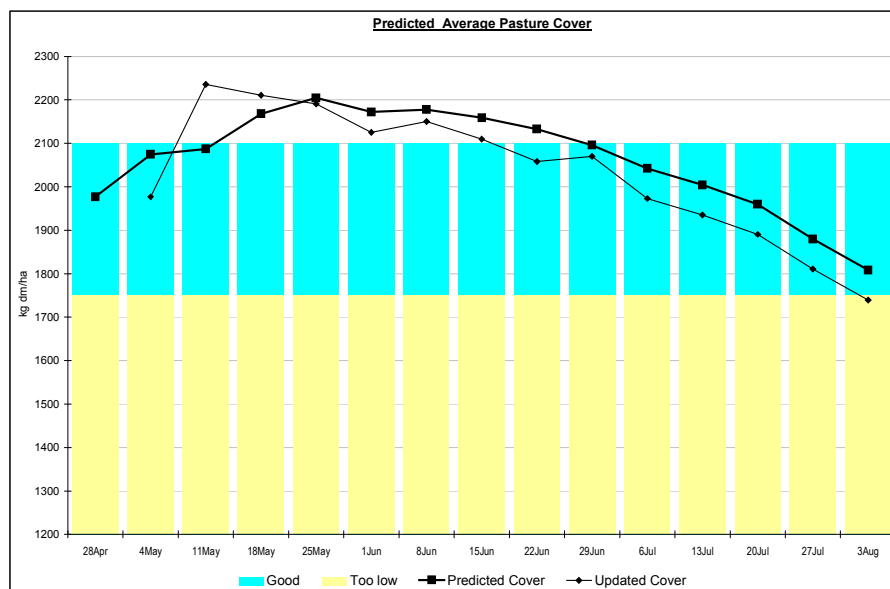
SUMMARY OF FARMING OPERATION DATA

Pasture Information		Animal Production	
LER	20 days/leaf	Cows	880 (dry herd) 200 (milking herd)
Rotation Length	100 plus days	Litres/cow/day	13
Pasture Growth Rate	9 kgDM/ha/day	MS/cow/day	1.13kg
Average Pasture Cover	1973 kgDM/ha	MS/ha/day	0.61kg
Soil Temperature 9AM	10°C	Cow intake	8 kgDM/cow/day (Dry) 15 kgDM/cow/day (Milking)
Rainfall (past 7 days)	22 mm	Supplement Fed	2kgDM/cow/day grain (milking herd) 6 kgDM/cow/day hay (dry herd)
MOFC (\$/cow)	\$0.00	Body Condition Score	5 (dry herd)

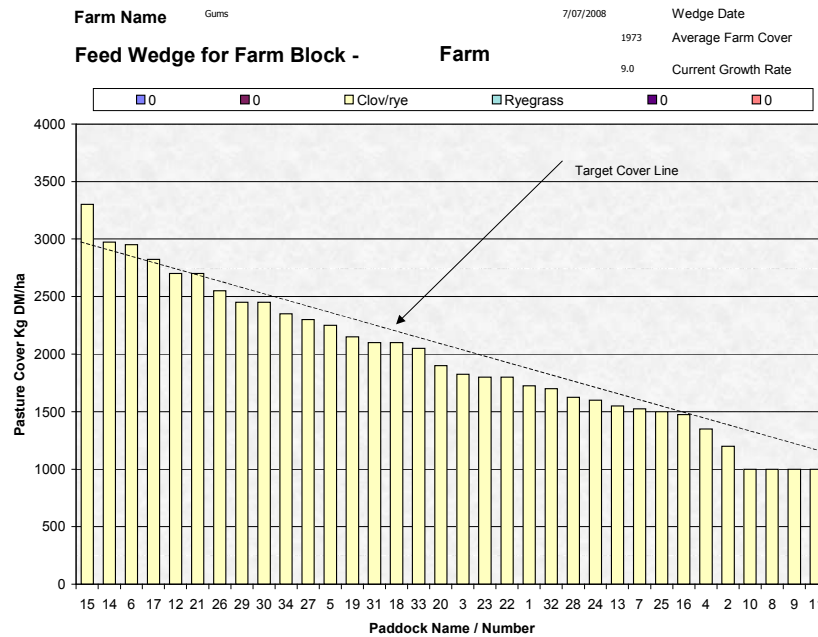
*Note the herd gets body condition scored every 2 weeks.

Pasture Management

- Pasture growth rates have held at 9kgDM/ha/day over the past week. This is below current pasture demand, thus the decrease in average pasture cover. Rotation length is currently playing a major role in trying to maintain pasture cover on the grazing platform. See below for projected change in average pasture cover up until August 3.



- The feedwedge is starting to display pasture deficits on the grazing platform. This is to be expected as July growth rates are well below demand. The FMG will continue with nitrogen at 46kgN/ha (100kg Urea/ha) to help improve pasture growth.



- Supplements continue to be fed to the dry herd, with hay being around two thirds of the total ration. Concentrates have been included into the milking herd's daily ration at 2kgDM/cow/day. Springers are being fed 1kgDM/cow each time they enter the dairy (the springing herd enters the dairy daily so that calved cows can be drafted out). This is done to help cow flow onto the platform when they enter the colostrum herd and to adjust their rumen to the concentrate. Cow flow in the milking / colostrum herds has significantly improved compared with last season.

Animal and Financial Performance

- Total cow numbers = 898; Cow deaths = 4; Colostrum herd = 70; Milking herd = 200; Sick herd = 15 Cows are calving at a rate of 20 per day. 3 cows have died from being "cast" and 1 from milk fever. Milk fever has been a real issue with 20 cows already succumbing to it. Magnesium supplementation through the dusting of CauseMag onto the pastures has been interrupted over the past week because of equipment breakdown. The herd has not taken to the post calving transition cow formula, and alterations have been made to make it more inviting and palatable to the animals. Again this highlights how susceptible animals on a pasture based diet are to milk fever without the appropriate magnesium and calcium supplementation.
- Herd daily ration details

Milking Herd	Colostrum Herd	Springing Herd	Dry Herd
Allocated 13kgDM Pasture 2kgDM Concentrates	Allocated 13kgDM Pasture 2kgDM Concentrates <i>Post Calving Transition Cow Formula plus CauseMag dusted on pasture</i>	Allocated 6kgDM Hay 2kgDM Pasture <i>Pre Calving Transition Cow Formula plus CauseMag dusted on pasture/hay</i>	Allocated 6kgDM Hay 2kgDM Pasture <i>CauseMag dusted on pasture/hay</i>

THE NEXT WEEKLY TDDF FMG farm walk will be on Monday July 14 at 10:30am. TDDF Farm Management Group – Basil Doonan (Davey & Maynard), Rob La Grange (TIAR), Chris Haynes (TIAR), and Justin McGowan and Nicki Devantier (TDDF Sharefarmers).